



Urban further improves and develops feeding technology for calves

Wüstring, September 20th 2022

Around the world, calf feeding technology relies on both mobile and stationary technical solutions. Both make farm work considerably easier and - in the case of stationary solutions - offer the additional advantage of work being carried out at any time of the day and providing automated health monitoring of the animals on the basis of their drinking and visiting behaviour at the feeding stations.

Urban GmbH & Co. KG has once again improved and further developed its established feeding technology for calves in several aspects.

For stationary feeding solutions, Urban now relies on chemical-free and energy-saving disinfection of feeders using UV-C rays to enhance hygiene. For example, the award-winning HygieneSet^{UV-C} is now available for the proven Alma Pro automatic feeder. UV-C radiation disinfects the jointly used drinking teat and a UV-C lamp keeps the boiler water free of pathogens.

The newly designed suction unit of the feeding station makes it easier for the animals to find the teat which is now mounted in an inclined position. The teat holder now has an integrated check valve and a quick release connector for fast and easy teat replacement.

Urban now uses more durable hoses for the milk feed; they are of higher hygienic quality and with additional insulating sheathing. They do not only keep the risk of microbial colonisation low, but also prevent the milk from cooling down on its way to the teat.

For the first time, Urban presents a self-supporting, extremely stable double station unit which does not require any neck rails. This station is particularly suitable for larger farms, especially in the area of weanling raising. Due to the self-supporting construction, it is much easier to train the animals at these stations.

The newly developed FitPlus feeding scheme optimises feed preparation in the Alma Pro feeder so that feed is always available for the animals. Specifically, it ensures that warm milk is available at the teat immediately at the start of the drinking process and that there are no technology-related interruptions of the drinking process. As a result, an animal never has to wait for milk to be supplied; feed intake is relaxed and stress-free.

A central parameter of success in calf rearing is the average daily weight gain the animals can achieve during the milk feeding phase. To determine this parameter of success, Urban presents a newly designed calf scale. From the electronic unit of the scale a wireless transfer of the recorded weight values to the Urban VitalControl device via Bluetooth is possible. After weighing the entire group of animals the mean weight gain of the group can be determined directly via the evaluation functions of the VitalControl device. In addition, a transfer of the recorded weight values of individual animals is possible from the VitalControl device to the HerdePlus herd management programme or to the Alma Pro automatic feeder. In addition, data output as a .csv file is possible for evaluating the values using spreadsheet software.



In the field of mobile feeding solutions, Urban has once again improved and significantly refined the tried and tested MilkShuttle.

For larger farms that have to supply a large number of animals kept in individual housing, the tried and tested MilkShuttle is now available with a capacity of 350 litres (MS 350 model). This model uses the proven components from the MilkShuttle series. Wide base tyres and a low centre of gravity, resulting from the increased tank diameter, ensure continued excellent driving comfort and unrivalled traction in this new configuration of the shuttle as already achieved with previous models.

Several high-quality components of the MilkShuttle are now included as a standard. For example, the shuttle is now equipped with a removable main switch; if this is taken off, the shuttle is secured against unauthorised use/and or theft. Furthermore, the shuttle now comes with an even more powerful 24V dosing pump. Another new standard feature is a 24V socket which can be used to operating either the additional spotlight or the EcoProtector^{UV-C} for UV-C disinfection of the housing environment. The design of the milk pressure line's rising pipe was also improved. In addition to that, the shuttle now has a vacuum-proof lid.

A toolbox is a new optional feature for the MilkShuttle, in which various utensils can be carried, such as medicines or tools.

The MilkShuttle now has a high-quality flow sensor, which ensures highly precise dosing of the feed into the buckets.

This has made the MilkShuttle even more powerful and interesting, especially for farms that are confronted with an increasing size of their calf herd in the wake of the change in legal requirements for the transport of male calves.

The EuroTier exhibition will take place in Hanover/Germany from 15 to 18 November 2022.

You will find the exhibition stand of Urban GmbH & Co.KG in Hall 13 | B12

More information is available from:

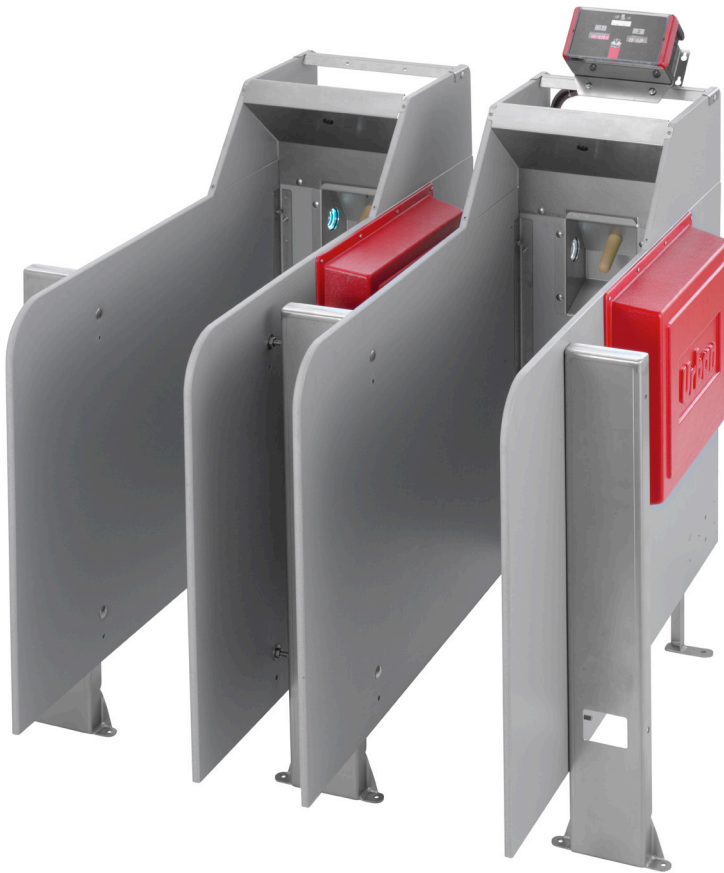
Dr. Andreas Deininger
+49 (0)4484 9380-65
adeininger@urbanonline.de



Digital press materials

You can find this and another press release as well as product photos at the following web address:

<https://eurotier.urbanonline.de>.



Alma Pro:
Double station unit without
neck rail.
(with the HygieneSet^{UV-C}
for automatic teat
disinfection)



Alma Pro:
easy teat replacement
thanks to quick-release
connector

Detail view FitPlus sensor:,
no technology-related
interruptions of drinking
process



MilkShuttle 350:
The ideal solution for
larger farms

MilkShuttle:
Toolbox,
removable main switch and
24 V socket

